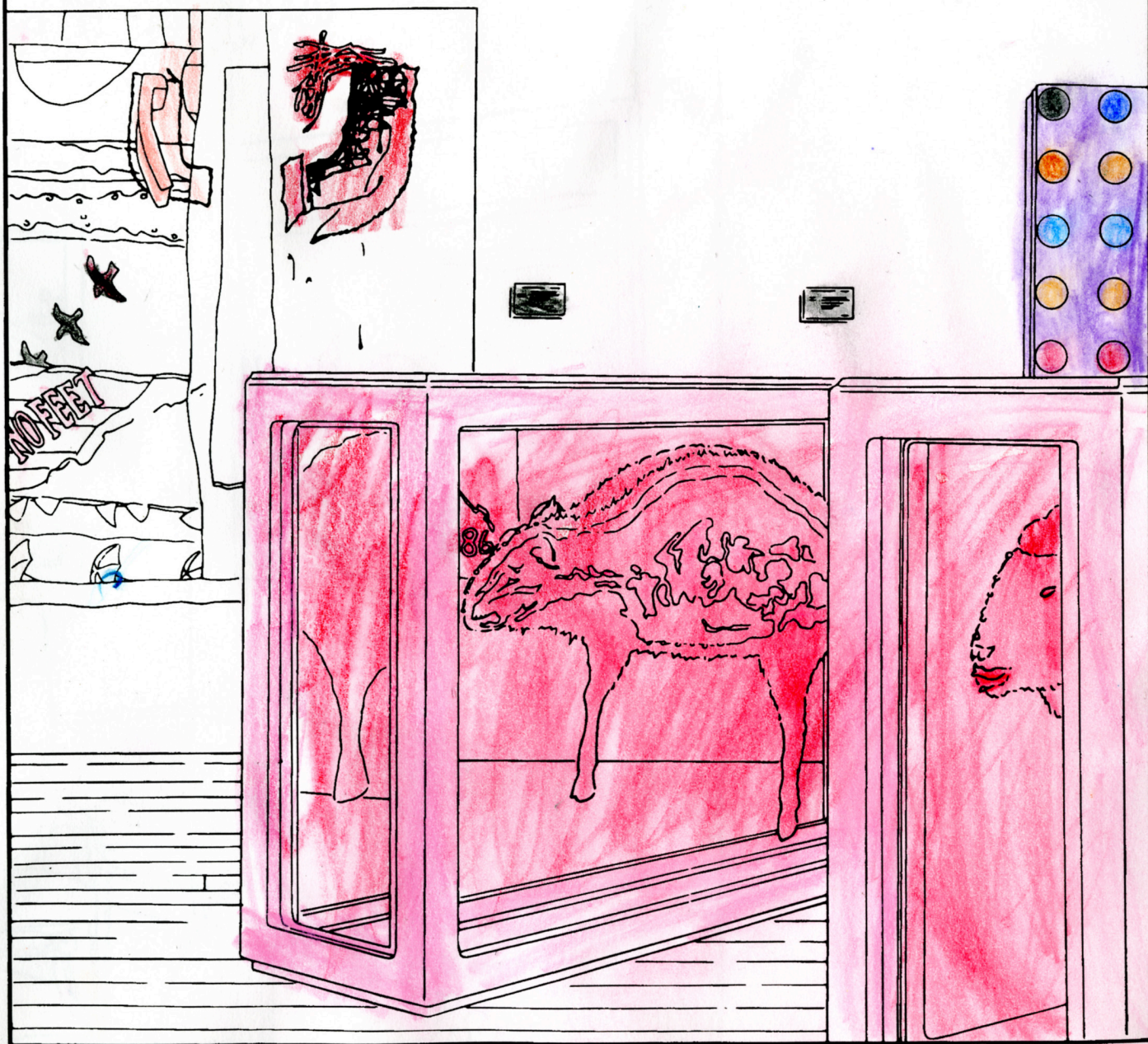
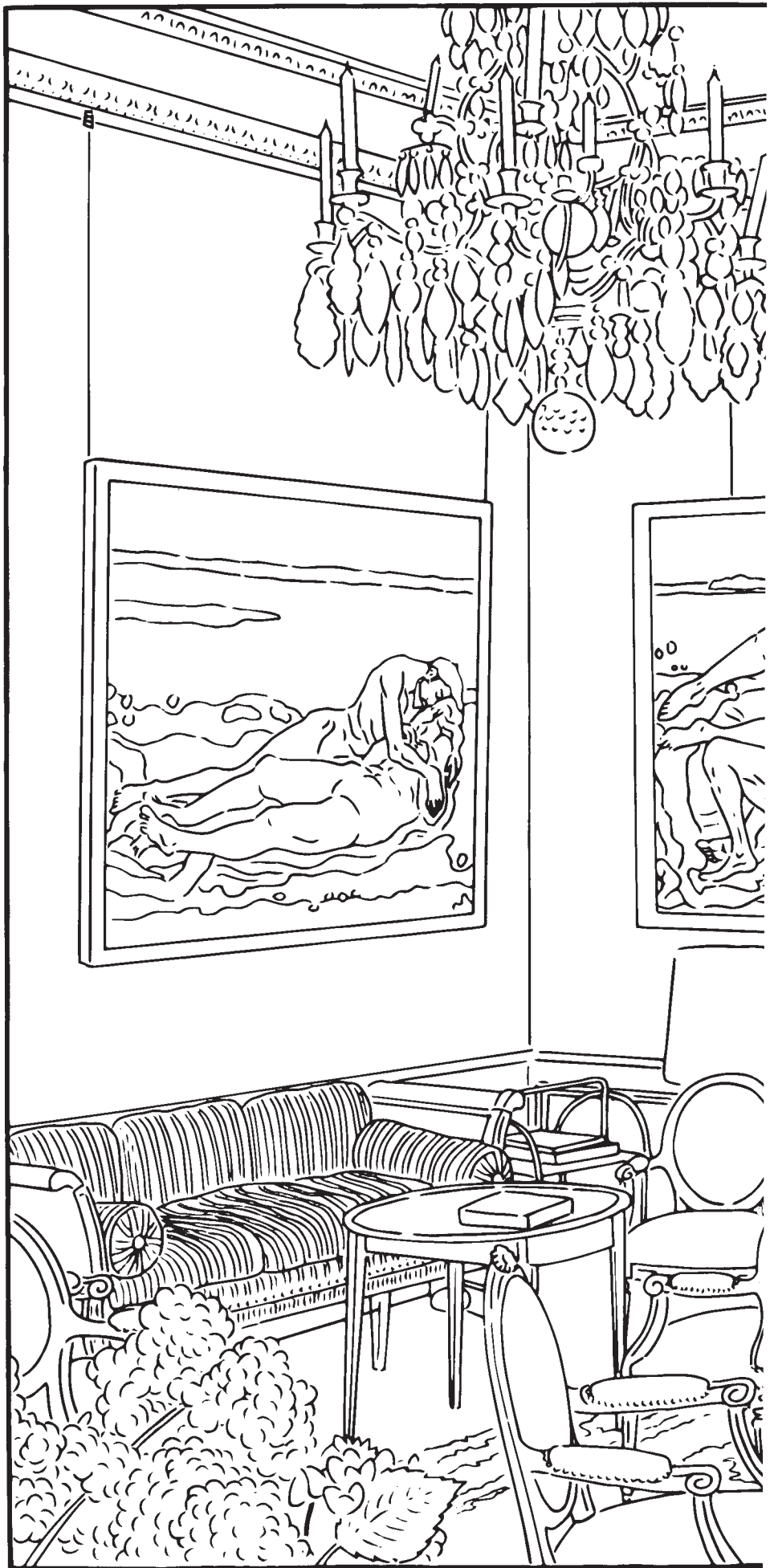


NO DRONES

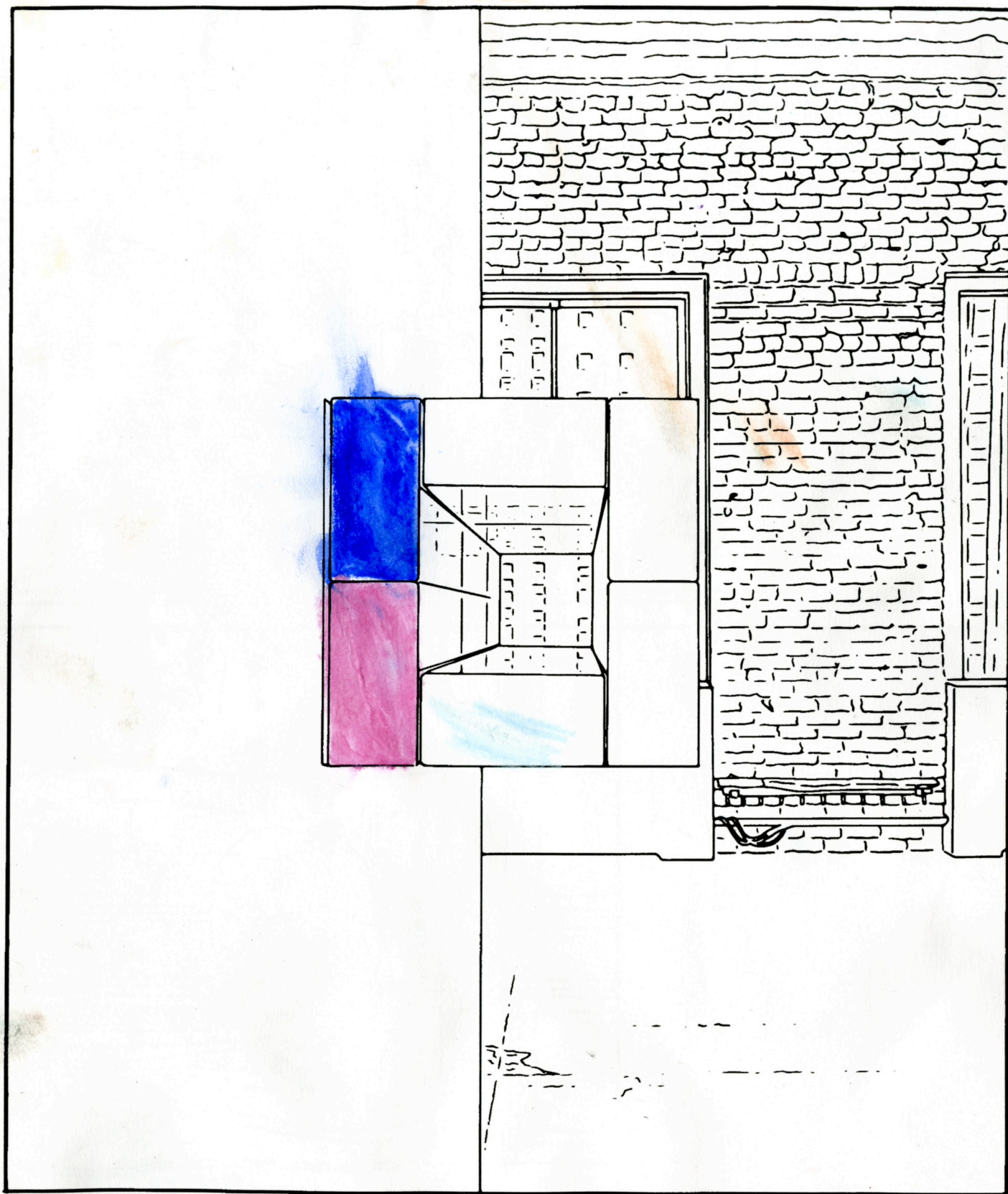


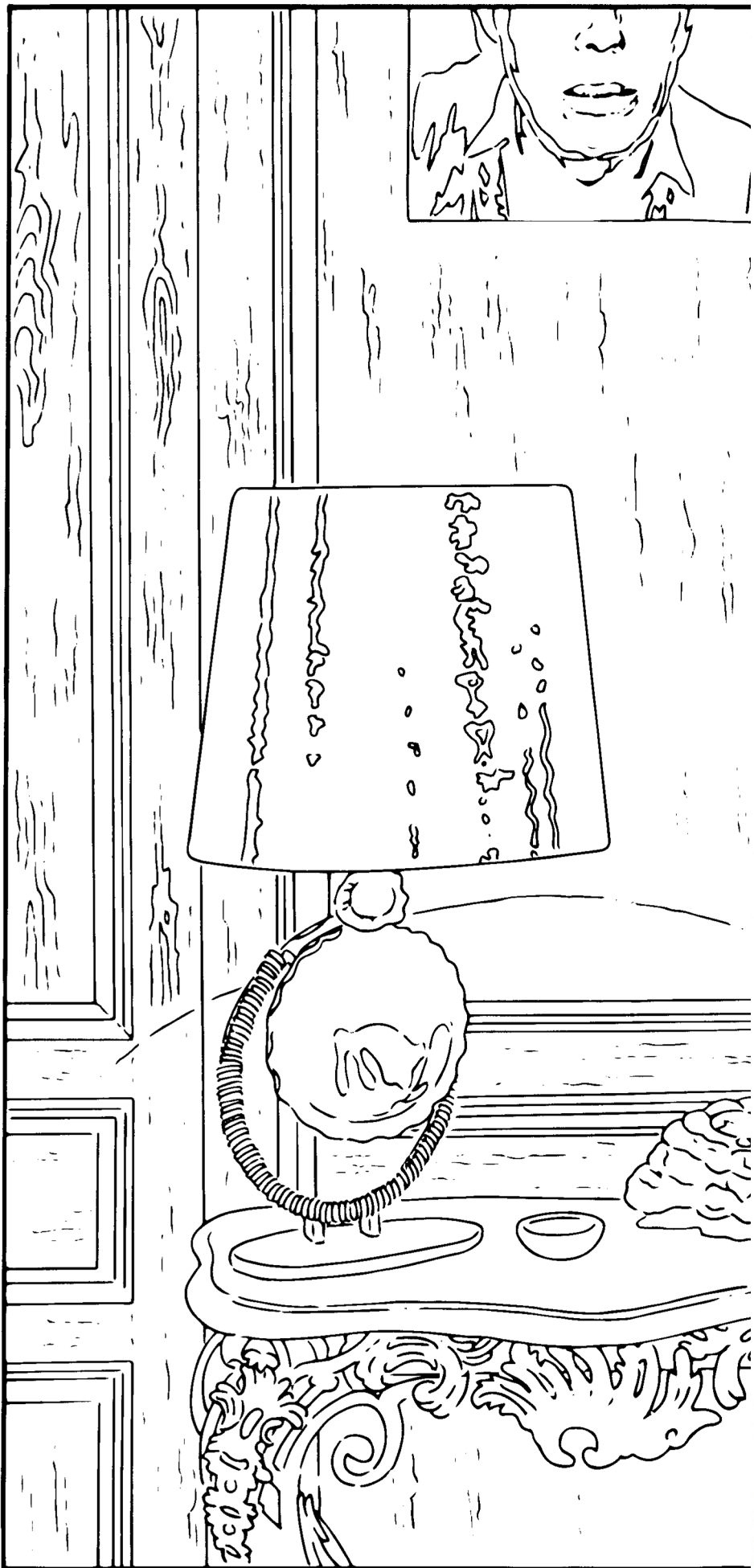




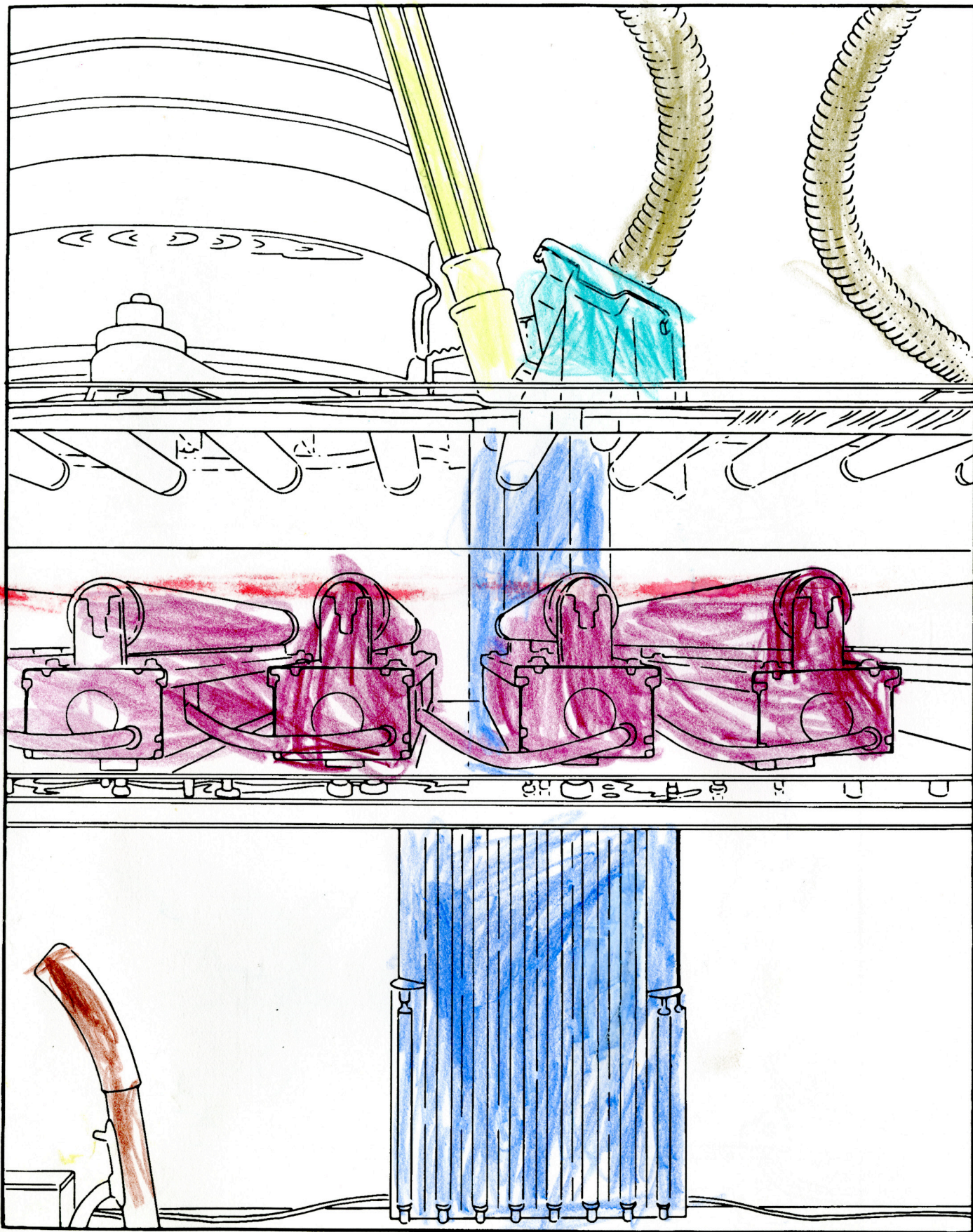






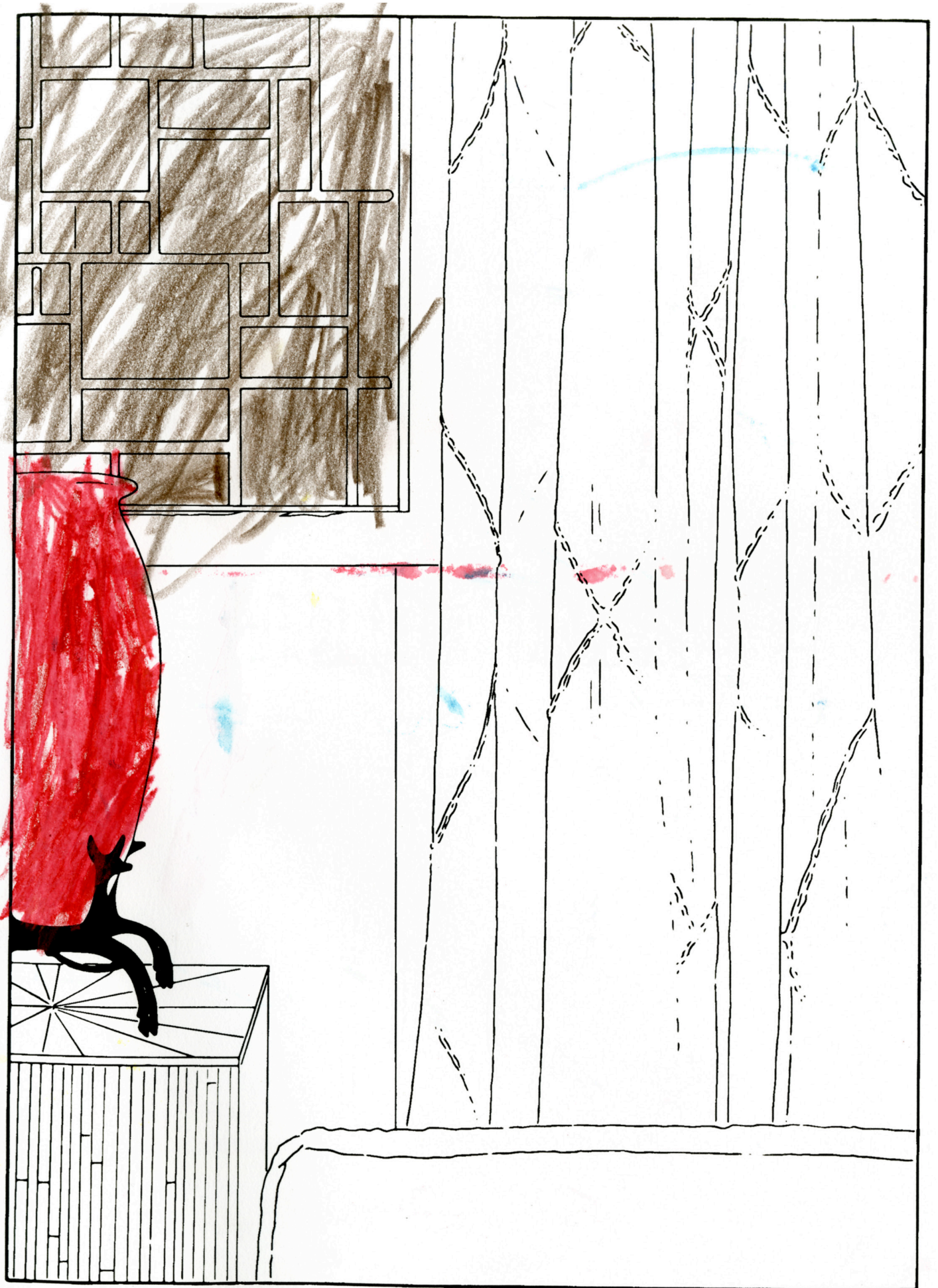




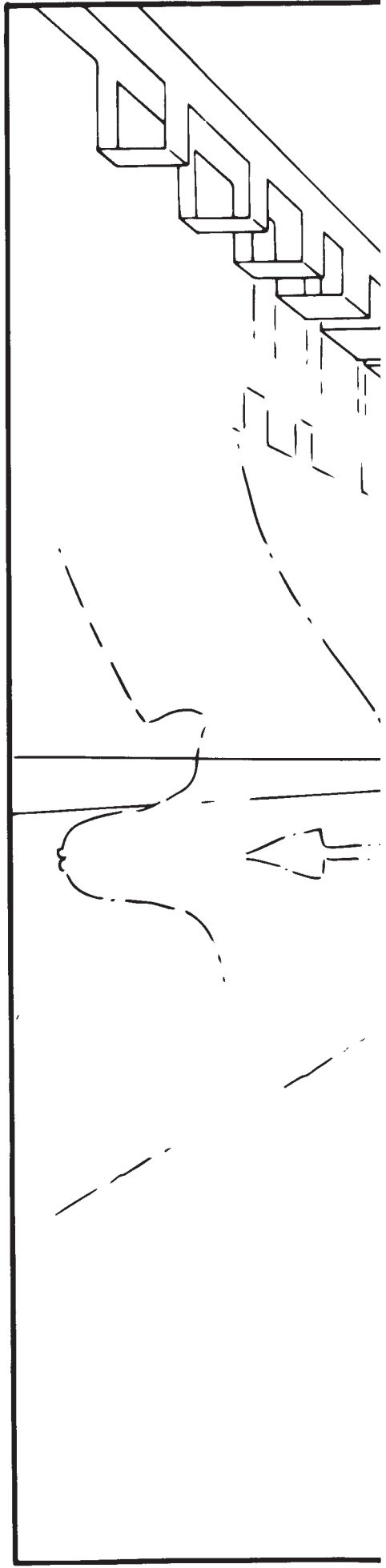


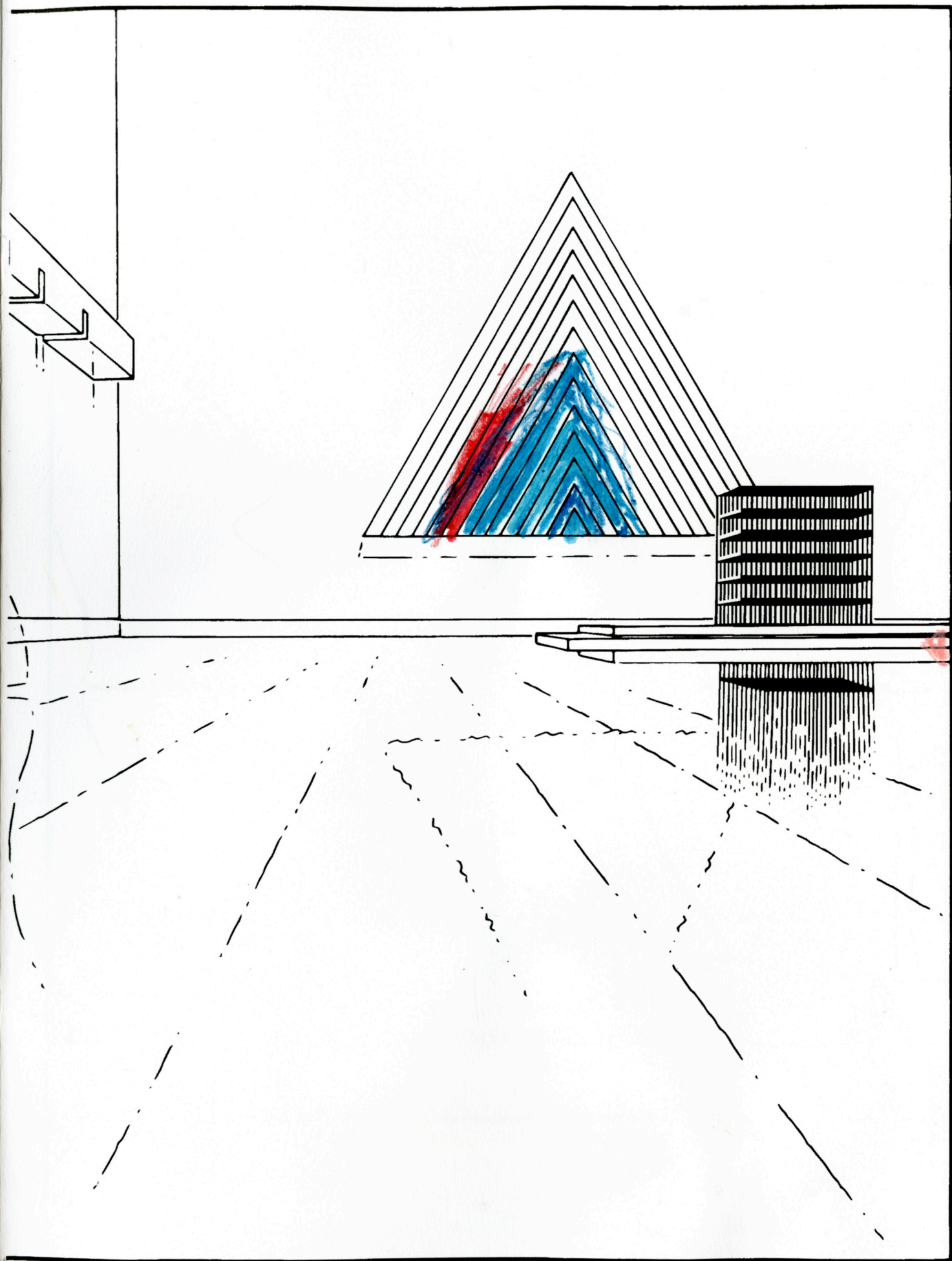


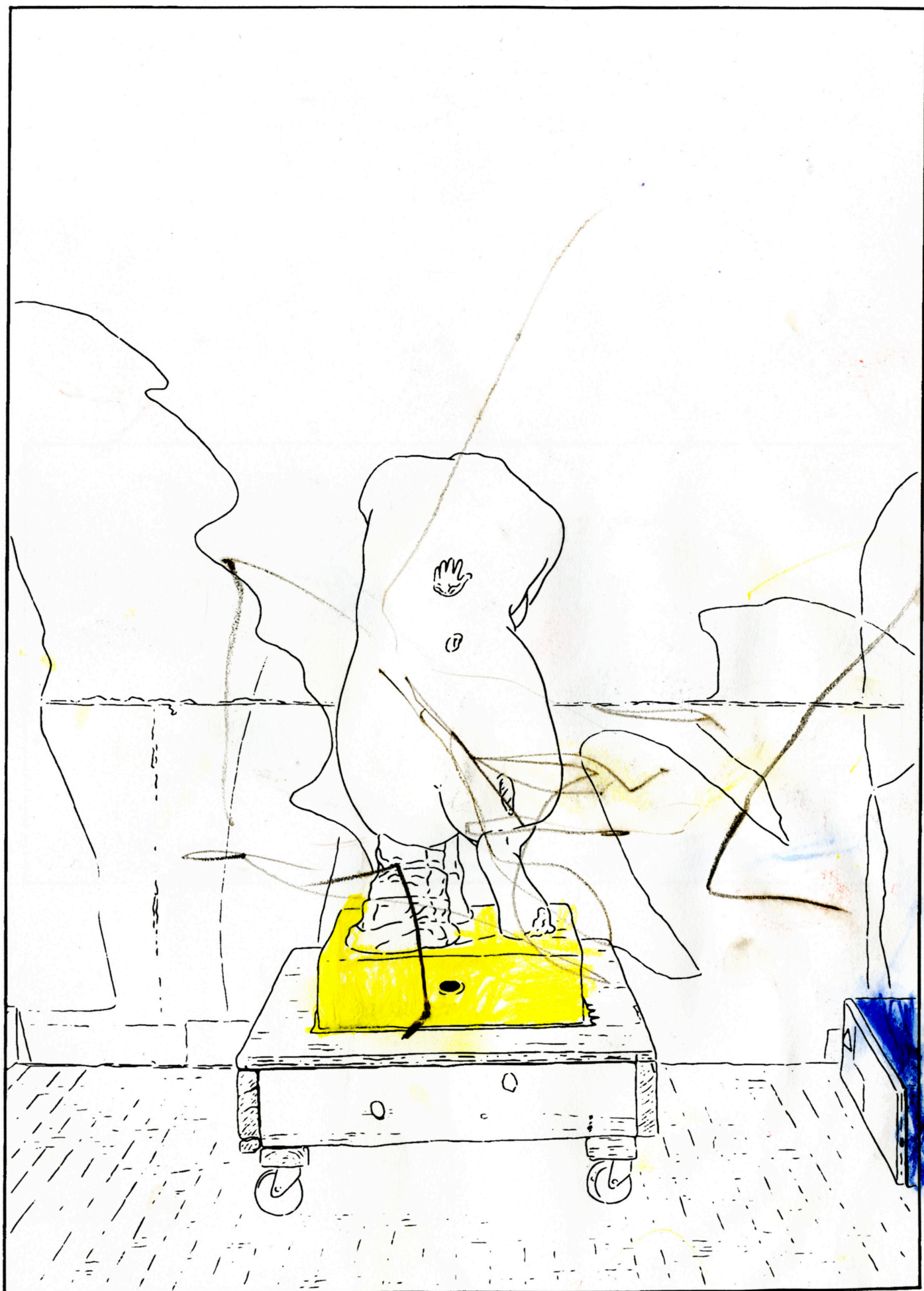




NO DRONES







Hand On Her Back (traced), 1997/1998/2013



Why Pictures Now (traced), 1981/2013

Adjusted
Museum Ludwig Cologne
October 11, 2013 to January 26, 2014

Works traced by Jon Buller

Graphic Design
2x4, New York
Michael Greenblatt
Donnie Luu
Michael Rock

Printed in Germany
asmuth druck + crossmedia gmbh & co. kg, Cologne
www.asmuth-koeln.de

Museum Ludwig
Heinrich-Böll-Platz, 50667 Köln
Tel +49 (0)221 221 26165
Fax +49 (0)221 221 24114
www.museum-ludwig.de

© 2013 for the works of art by Louise Lawler



PETER UND IRENE
LUDWIG STIFTUNG

Works colored by Assya, Lindi, Nareman

